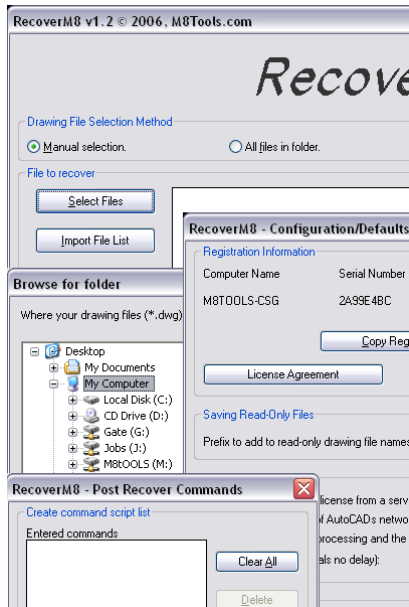

TOOLS CREATED TO MAKE
YOUR JOB EASIER.

BECAUSE YOUR TIME IS
VALUABLE

Solutions for a busy world



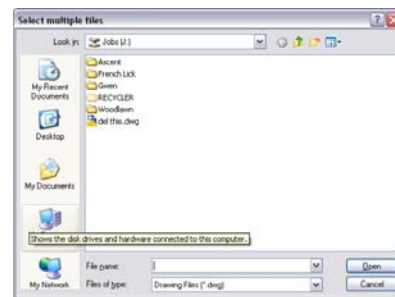
RECOVERM8

“Necessity is the mother of invention.” RecoverM8 was developed out of a need to re-archive thousands of old drawings that were being stored on old 3 1/2" floppy diskettes. Many of these archives had been stored on this media for 15 years and magnetic media is usually only good for 10 years. Out of 1200 diskettes only three were unreadable and unrecoverable.



RecoverM8 Main Dialog Box

In the Main Dialog Box you have three file selection choices: Manual, All files in folder, All files in folder and all subfolders. The select Files button will let you select files using the method you chose. Import File List button loads a saved drawing file selection set. Export File List button saves a drawing file selection set for re-use. The Sort File List button sorts the current drawing file listings. You can also run AutoCAD commands against the drawings that are recovered. You can save recovered drawings to an earlier version. The Config button will open up the configuration dialog box.



Manual File Selection Dialog Box

The Manual Selection files dialog box allows the user to select multiple drawing files to recover. You can step through drives and directories as needed.



All Files in Folder Dialog Box

The All Files in Folder dialog box allows the user to select all the drawing files that reside in the folder to recover. The All Files in Folder and All Sub-Folders dialog box lets the user select all drawing in all folders from the selected folder to all sub-folders.



Post Recover Commands Dialog Box

The Post Recover Commands dialog box allows the user to enter AutoCAD commands that they would like to have applied to drawings. Once entered, these commands appear in a displayed list.



Config Dialog Box

Config – Many of the default settings used by RecoverM8 can be set here. If you register the software, you enter the authorization code here. There is also a button for registration and license agreement. Add a prefix to read-only drawing file names.

SYSTEM REQUIREMENTS

Windows 2000, Windows XP, Windows Vista or Windows 7. AutoCAD versions 2000 through 2010. AutoCAD vertical applications are also supported (Architectural Desktop, Land Development Desktop, Mechanical Desktop, etc.). AutoCAD LT versions are **NOT** Supported.

AVAILABILITY

Download a 10 day fully functional demo or purchase a license at:

<http://www.m8tools.com/recoverm8.htm>

LICENSING INFORMATION

RecoverM8 is distributed as shareware and requires the use of an authorization code after the demo period expires. Each authorization code is unique to the computer RecoverM8 is installed on.

Pricing for licenses is as follows:

1st seat license is U.S. \$50.00.

2nd through 10th seat are an additional U.S. \$25.00 each.

11 or more seats are an additional U.S. \$15.00 each.

Site Licenses are available for sites or enterprises requiring more than 15 seats. Site Licenses do not require authorization codes; instead they are branded with the number of seats licensed and the name of the company licensing RecoverM8.

Contact M8Tools.com for pricing at (859) 619-1365 or email us at: sales@m8tools.com



Tools created to make your job easier.
Because these are AutoCAD tools you can use.

www.m8tools.com

240 Boone Avenue
Winchester, KY 40391

RecoverM8 © 2009, M8Tools.com