

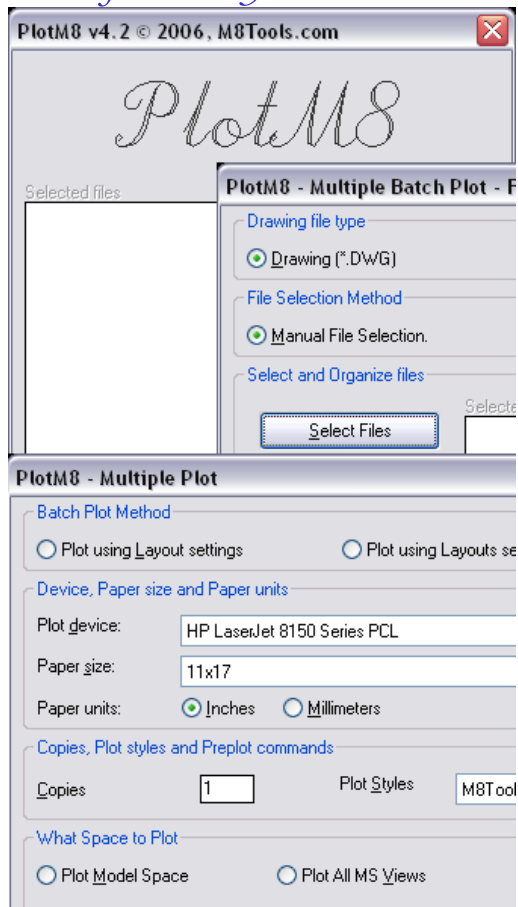
---

TOOLS CREATED TO MAKE YOUR  
JOB EASIER.

BECAUSE YOUR TIME IS  
VALUABLE

---

## *Solutions for a busy world*



## PLOTM8

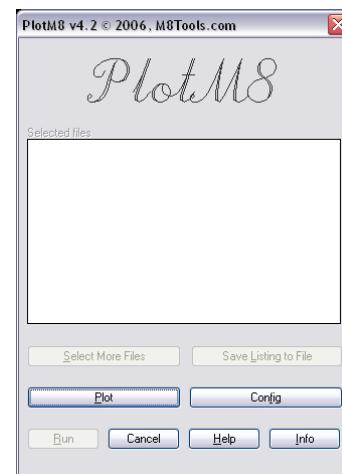
“Necessity – The Mother of Invention” PlotM8 was created from its sister product AutoM8. AutoM8 was a product created out of necessity. Many years ago I had a need to plot numerous drawings and AutoCAD didn’t have a way of doing this, so I created an AutoLisp utility to do this. It wasn’t long before the need to make batch changes came along. Then the need to batch purge because at that time I was archiving drawings on floppy disk and the smaller the file size the better.

M8Tools.com founder Craig Gorham

*One user wrote us:*

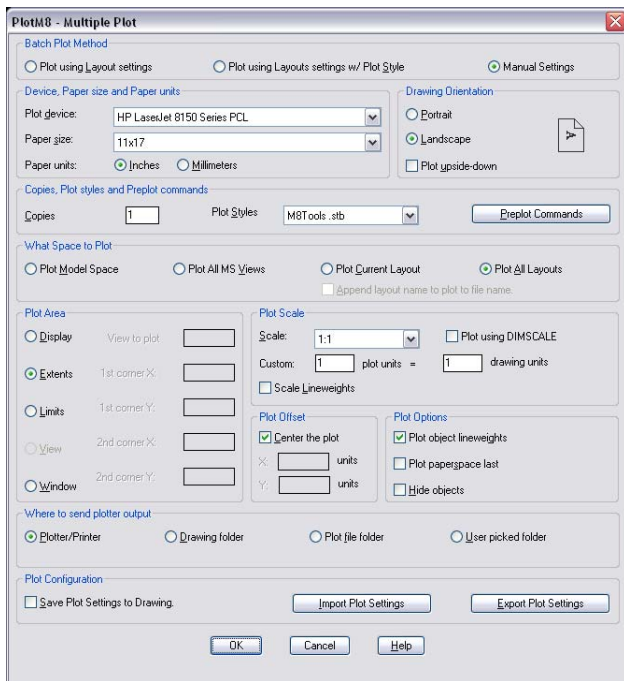
*Your timely responses to our concerns and willingness to research and modify your product to meet our needs is the kind of software support that is rare these days.*

*Dayna Parks  
Technology Manager  
Korda/Nemeth Engineering, Inc.*



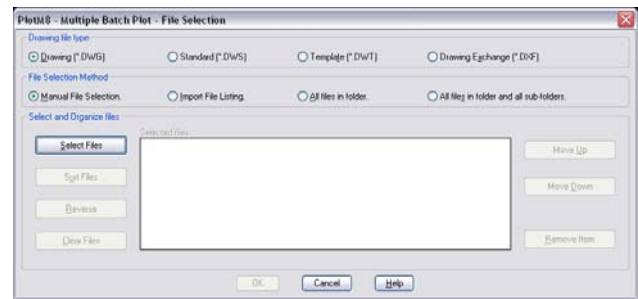
Main Dialog Box

PlotM8 lets you select multiple drawings from any folder and batch plot them. You can sort and rearrange the order in which files are batch plotted. Export or Import your file selections. Batch plot using printer/plotter assigned to the layout(s) or batch plot using manual settings and control the plotted output to the sheet size, pen settings, scale and any other plot setting you need and have all the output appear as desired. You can sent plot output to either a printer/plotter, drawing folder, designated plot file folder or pick a folder on the fly. PlotM8 is regularly updated and many of the features have been added from user feedback.



Plot Dialog Box

**Plot** – There are two ways to batch plot, use the printer/plotter assigned to the layout or manually define the plotter settings with setting any of the following: plotter, paper size, paper units, drawing orientation, to plot upside-down, number of copies, plot style, enter preplot commands, plot the model space tab, all model space views, current paper space tab or all the paper space tabs (layouts), area to plot, plot scale, plot offset or centered, plot options of lineweights, plot paper space last, and hide objects, plot to a printer/plotter or to a file. You have the option to save these settings to the layout and save the drawing. Import and export plot settings. Once plot settings are set pick OK, you will then be able to select and organize the drawing files you want to plot.



File Selection Dialog Box

**File Selection** – After selecting and setting up the batch process method, you will then be able to select drawing files. Once files are selected you can add or remove, sort and reverse order. By picking OK you will be taken back to the main dialog where the selected files will be listed. You can then pick more files, setup another batch or run the current batch.

## SYSTEM REQUIREMENTS

Windows 2000, Windows XP, Windows Vista or Windows 7. AutoCAD versions 2000 through 2010. AutoCAD vertical applications are also supported (Architectural Desktop, Land Development Desktop, Mechanical Desktop, etc.). AutoCAD LT versions are **NOT** Supported.

## AVAILABILITY

Download a 31 day fully functional demo or purchase a license at:

<http://www.m8tools.com/plotm8.htm>

## LICENSING INFORMATION

PlotM8 is distributed as shareware and requires the use of an authorization code after the demo period expires. Each authorization code is unique to the computer PlotM8 is installed on.

Pricing for licenses is as follows:

1st seat license is U.S. \$35.00. 2nd through 10th seat are an additional U.S. \$25.00 each. 11 or more seats are an additional U.S. \$15.00 each.

Site Licenses are available for sites or enterprises requiring more than 15 seats. Site Licenses do not require authorization codes; instead they are branded with the number of seats licensed and the name of the company licensing PlotM8.

Contact M8Tools.com for pricing at (859) 619-1365 or email us at: [sales@m8tools.com](mailto:sales@m8tools.com)



**www.m8tools.com**

240 Boone Avenue  
Winchester, KY 40391

PlotM8 © 2009, M8Tools.com