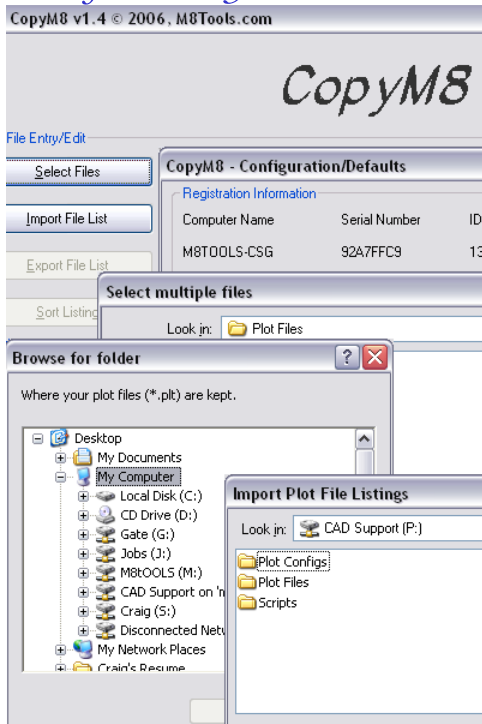

TOOLS CREATED TO MAKE YOUR
JOB EASIER.

BECAUSE YOUR TIME IS VALUABLE.

Solutions for a busy world



COPYM8

Created so you could have a quick and simple way to create collated print sets. Select a group of plot files (*.plt) and arrange them in the order you want, set the number of copies, pick the name of the printer/plotter, pick OK and CopyM8 will then spool the plot files to a printer/plotter you selected. The plot files will be printed in collated order.

One user wrote us:

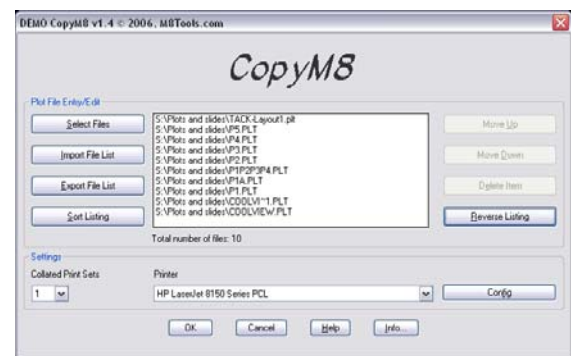
CopyM8 fills a great need that we've had for a very very long time.

Thanks

*J. Baker
Quality Designs*

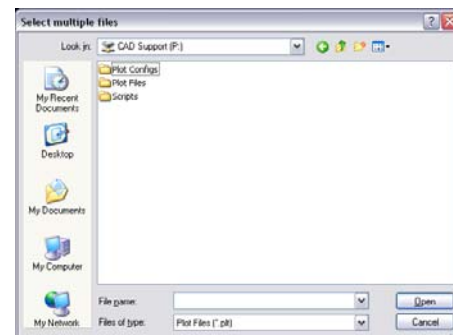
CopyM8 complements three other programs from M8Tools.com, AutoM8, BatchM8 and PlotM8. Each of these has the option of batch plotting drawing files and having the plot files written to disk. Plot files (*.plt) are what CopyM8 sends to the printer/plotter.

The benefits of using CopyM8 are that you can have groups of plot files saved on disk and then print them out in a collated order (similar to what a copier does). For more information on AutoM8, BatchM8 or PlotM8 go to: www.m8tools.com



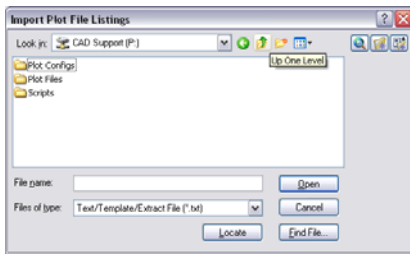
CopyM8 Main Dialog Box

The Main CopyM8 dialog box – Select plot files, Import or Export file listings, Sort files, Select a file in the listing and either move it up, move it down or remove it from the listing. Select the number of sets you wish to create, pick the name of the printer/plotter that you will use. In the text below you can read more about what each feature does.



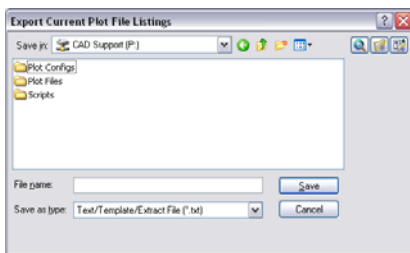
Select Files Dialog Box

Select Files – The Select Multiple Files function allows you to add multiple plot files to the queue list. To select additional files from other locations, just pick the Select Files button again to navigate through drives, directories or network locations.



Import Plot File Listing Dialog Box

Import Files - The Import Plot File Listings function allows you to import plot file listings stored in a text (*.txt) file. These text files contain the path and file name. Full UNC Paths (Universal Naming Convention) are supported (\\server\share).



Export Plot File Listing Dialog Box

Export Files - The Export Current Plot File Listings function allows you to export the current plot file queue list and save it to a text (*.txt) file so it can be imported later.

Sort File List – Sorts the current queue listing. Sorts plot file listing numerically first, then alphabetically.

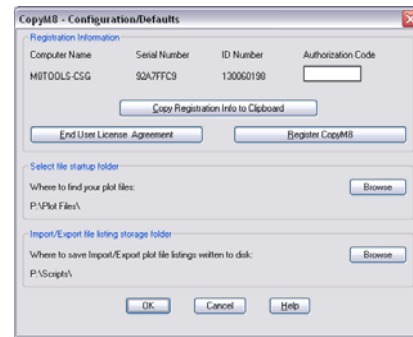
Move up – Moves a selected plot file name up one position in the queue list.

Move Down - Moves a selected plot file name down one position in the queue list.

Delete Item – Deletes a selected plot file name from the queue listing. (CopyM8 does not delete the actual plot file).

Collated Print Sets – Select the number of full sets to print.

Printer - Select the printer/plotter that will print the plot files (Note: This selection needs to be the same printer/plotter that created the plot file).



Config Dialog Box

Config – Define startup directories for plot files, import and export plot file list files. Users also enter the authorization code here. The license agreement can be viewed and the software registered.

OK – Prints the files and displays its status in the AutoCAD's command line area.

SYSTEM REQUIREMENTS

Windows 2000, Windows XP, Windows Vista or Windows 7. AutoCAD versions 2000 through 2010. AutoCAD vertical applications are also supported (Architectural Desktop, Land Development Desktop, Mechanical Desktop, etc.). AutoCAD LT versions are **NOT** Supported.

AVAILABILITY

Download a 31 day fully functional demo or purchase a license at:

<http://www.m8tools.com/copym8.htm>

LICENSING INFORMATION

CopyM8 is distributed as shareware and requires the use of an authorization code after the demo period expires. Each authorization code is unique to the computer CopyM8 is installed on.

Pricing for licenses is as follows:

1st seat license is U.S. \$20.00. 2nd through 10th seat are an additional U.S. \$15.00 each. 11 or more seats are an additional U.S. \$10.00 each.

Site and Enterprise Licenses also available. Contact M8Tools.com for more information. Phone: (859) 619-1365 or email us at: sales@m8toos.com



*Tools created to make your job easier.
Because these are AutoCAD tools you can use.*

www.m8tools.com 240 Boone Avenue, Winchester, KY 40391

CopyM8 © 2009, M8Tools.com