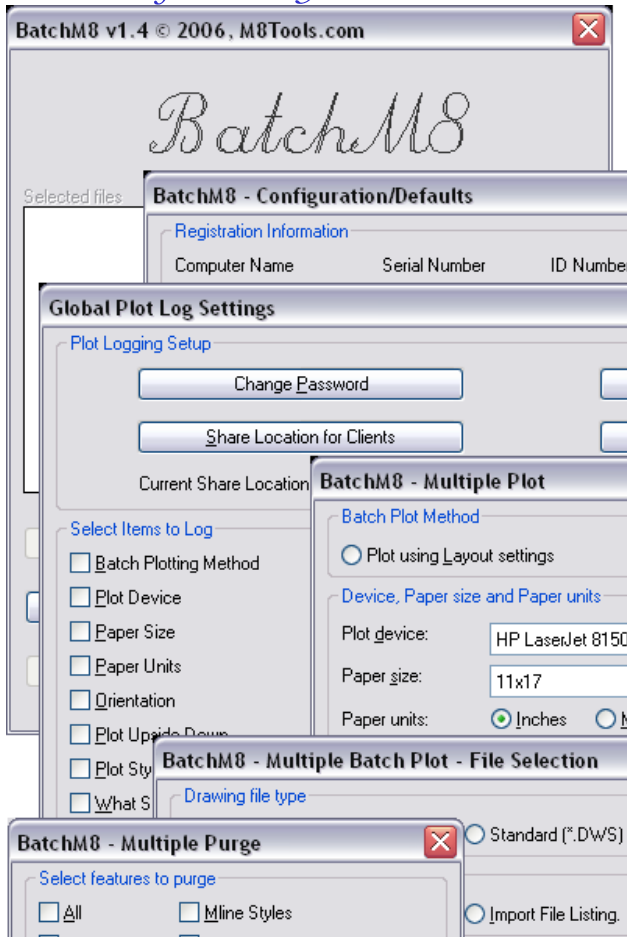

TOOLS CREATED TO MAKE YOUR
JOB EASIER.

BECAUSE YOUR TIME IS VALUABLE.

Solutions for a busy world



BATCHM8

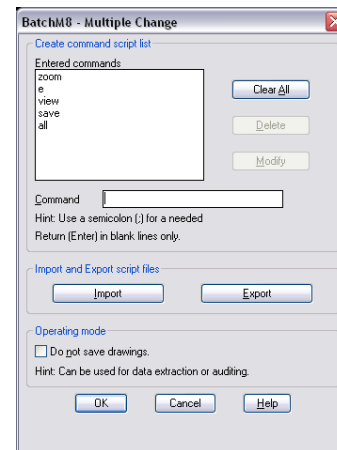
For users who need to do plot logging along with batch plotting, BatchM8 will let you do this plus much more. BatchM8 is similar to our Product AutoM8 in that it will let you batch change, batch plot and batch purge selected drawings. Export or Import your file selections. Batch plot using printer/plotter assigned to the layout(s) or batch plot using manual settings and control the plotted output to the sheet size, pen settings, scale and any other plot setting you need and have all the output appear as desired. You can send plot output to either a printer/plotter, drawing folder, designated plot file folder or pick a folder on the fly. BatchM8 is

regularly updated and many of the features have been added from user feedback.



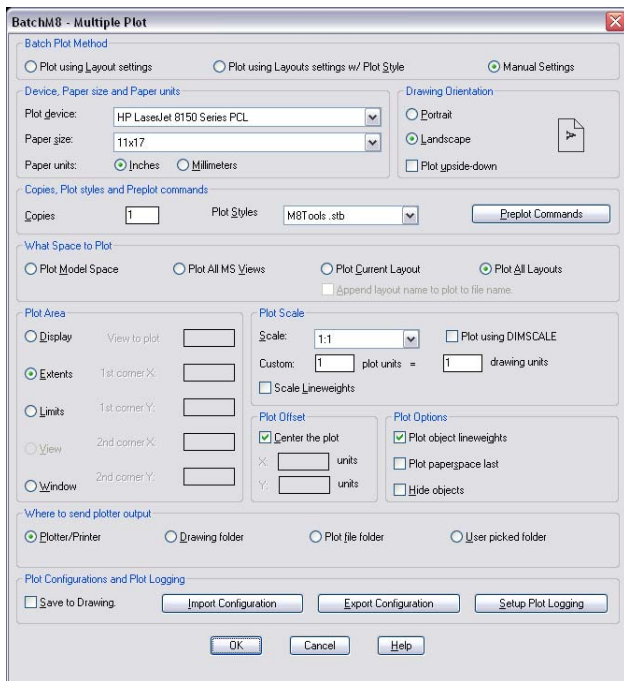
Main Dialog Box

The main BatchM8 dialog box gives you the choice of the three primary options: **Change**, **Plot**, or **Purge**, along with Config, Help, Info, Select More Files and Save Selections options.



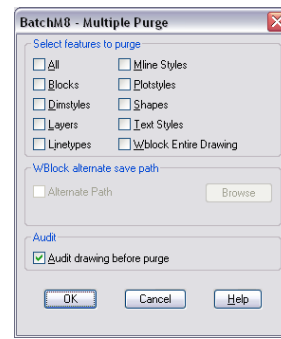
Change Dialog Box

Change – Enter AutoCAD commands to form a script or load a saved command script that will be applied to the selected drawings. The commands can also be exported for later use. Once the command script is generated pick OK, you will then be able to select and organize the drawing files you want to change.



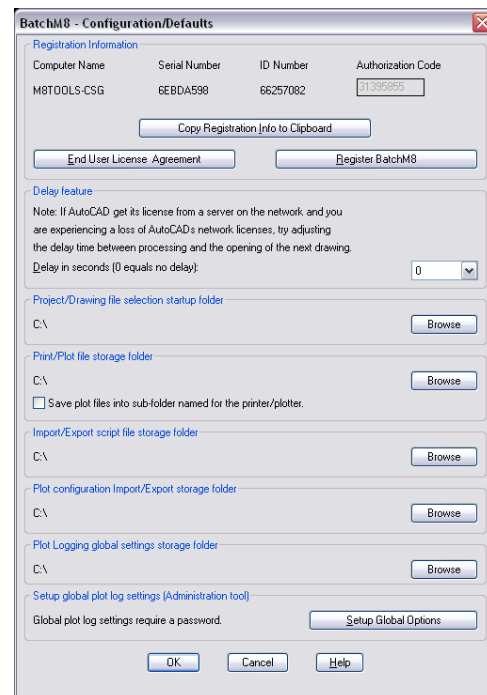
Plot Dialog Box

Plot – There are two ways to batch plot, use the printer/plotter assigned to the layout or manually define the plotter settings with setting any of the following: plotter, paper size, paper units, drawing orientation, to plot upside-down, number of copies, plot style, enter preplot commands (similar to the Change option), plot the model space tab, all model space views, current paper space tab or all the paper space tabs (layouts), area to plot, plot scale, plot offset or centered, plot options of lineweights, plot paper space last, and hide objects, plot to a printer/plotter or to a file. BatchM8 is similar to our AutoM8 product with the difference being that you can also log plotting information. You pick or enter in the project information, phase of the project, type of media plots are output to, and there is even a field for user comments. You have the option to save these settings to the layout and save the drawing. Import and export plot settings. Once plot settings are set pick OK, you will then be able to select and organize the drawing files you want to plot.



Purge Dialog Box

Purge – Select the type of purging you want to do, be it any unused: Blocks, Dimstyles, Layers, Linetypes, Mline styles, Plotstyles, Shapes, Text styles, or All of the previously mentioned items. Or you can WBlock the entire drawing. Once you have set up the selection pick OK, you will then be able to select and organize the drawing files you want to purge.



Config Dialog Box

Config – Many of the default settings used by BatchM8 can be set in the config dialog. If you choose to register the software, then you would enter the authorization code here. There is also a button for registration and license agreement. There is an option to insert a delay into the batch processing. Setup your startup folders for: project



www.m8tools.com

240 Boone Avenue

Winchester, KY 40391

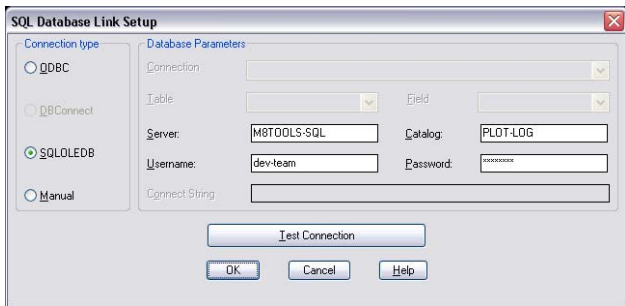
BatchM8 © 2009, M8Tools.com

and/or drawing files, plot files, command scripts and plot configuration. To configure plot logging, pick the Setup Global Options button.



Global Plot Logging Options Dialog Box

Global plot logging options - You pick which options you want to log when batch plotting. There are four basic methods for importing and exporting plot logging information (SQL Database, Access Database, Spreadsheet and Text). If you choose to setup logging to a SQL Database you can setup the connection in several different ways. (See below).



SQL Database Setup Dialog Box

SQL Database Setup Dialog box - Setup the Project Import database connection or the Plot Logging Export database connection. There are four types of database connections that you can make: *ODBC* - Use a connection that is already defined in User or System DSN sources. *DBConnect* - Use a database connection that is already defined in AutoCAD's DBConnect command. *SQLOLEDB* - Define a link to either a SQL Server or a SQL

Database. *Manual* - Create a custom connection string to connect to a database.



File Selection Dialog Box

File Selection – After selecting and setting up the batch process method, you will then be able to select drawing files. Once files are selected you can add or remove, sort and reverse order. By picking OK you will be taken back to the main dialog where the selected files will be listed. You can then pick more files, setup another batch or run the current batch.

SYSTEM REQUIREMENTS

Windows 2000, Windows XP, Windows Vista or Windows 7. AutoCAD versions 2000 through 2010. AutoCAD vertical applications are also supported (Architectural Desktop, Land Development Desktop, Mechanical Desktop, etc.). AutoCAD LT versions are **NOT** Supported.

AVAILABILITY

Download a 15 day fully functional demo or purchase a license at:
<http://www.m8tools.com/batchm8.htm>

LICENSING INFORMATION

BatchM8 is distributed as shareware and requires the use of an authorization code after the demo period expires. Each authorization code is unique to the computer BatchM8 is installed on.

Pricing for licenses is as follows:

- 1st seat license is U.S. \$50.00.
 - 2nd through 10th seat are an additional U.S. \$35.00 each.
 - 11 or more seats are an additional U.S. \$20.00 each.
- Site Licenses are available for sites or enterprises requiring more than 15 seats. Site Licenses do not require authorization codes; instead they are branded with the number of seats licensed and the name of the company licensing BatchM8. Contact M8Tools.com for pricing at (859) 619-1365